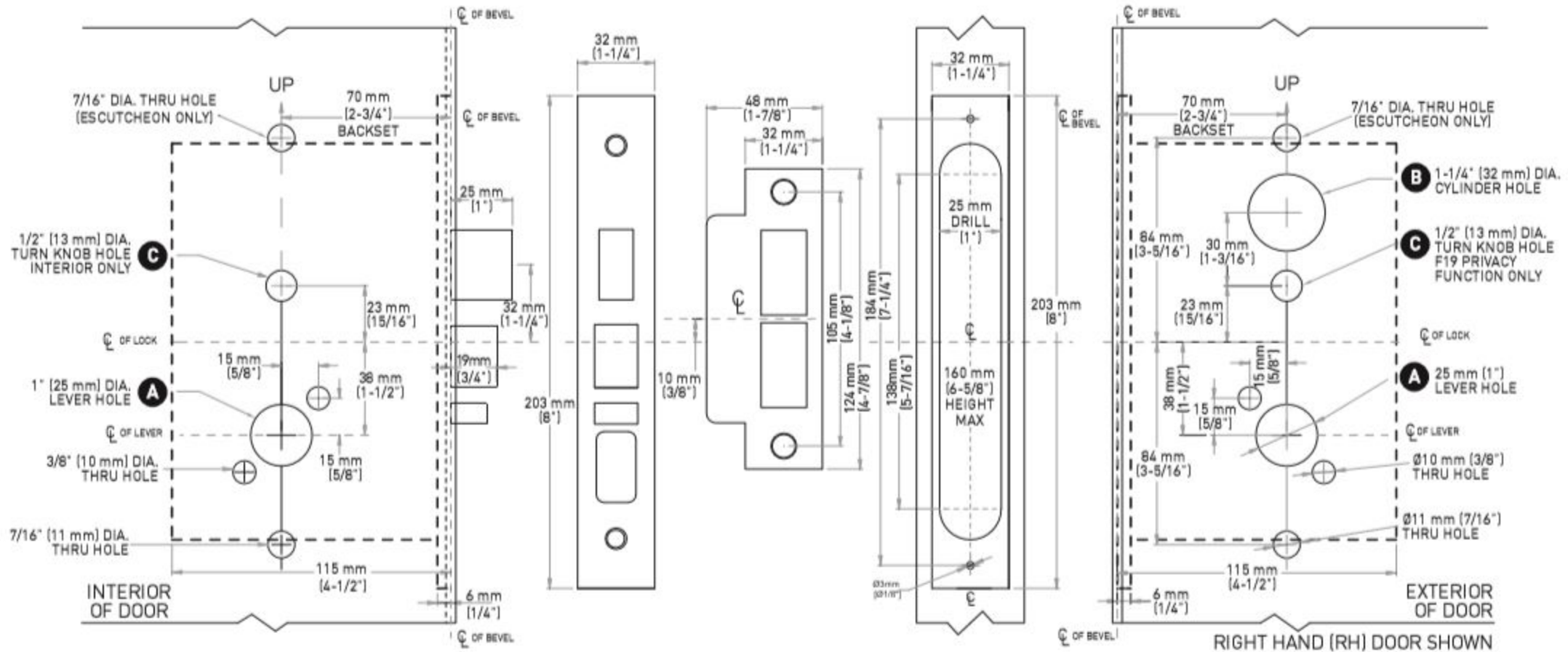
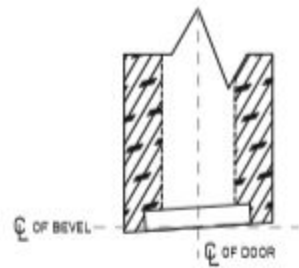


F01 - PASSAGE	•	•	•	•
F04 - ENTRY	•	•	•	•
F05 - CLASSROOM	•	•	•	•
F13 - DORMITORY/EXIT	•	•	•	•
F07 - STOREROOM	•	•	•	•
F19 - PRIVACY	•	•	•	•
F20 - CORRIDOR	•	•	•	•
F13 - STOREROOM WITH DEADBOLT	•	•	•	•



NOTES:

1. Templates are not to scale
2. 3900 series mortise locks meet all requirements for door and frame installations prepared to ANSI A156.13
3. Refer to strike prep template for additional details

	TAYMOR INDUSTRIES LTD.	RELEASE DATE
	FOR 3900 SERIES ESCUTCHEON COMMERCIAL AND RESIDENTIAL MORTISE LOCK (CASSETTE ASSEMBLIES ONLY)	April 22, 2014
		TEMPLATE NO.
		T39ME01-W