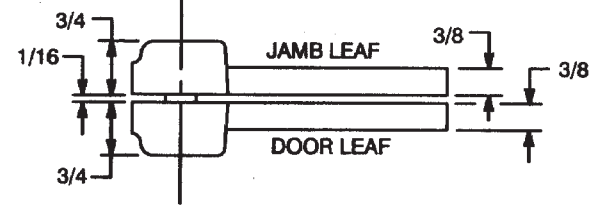
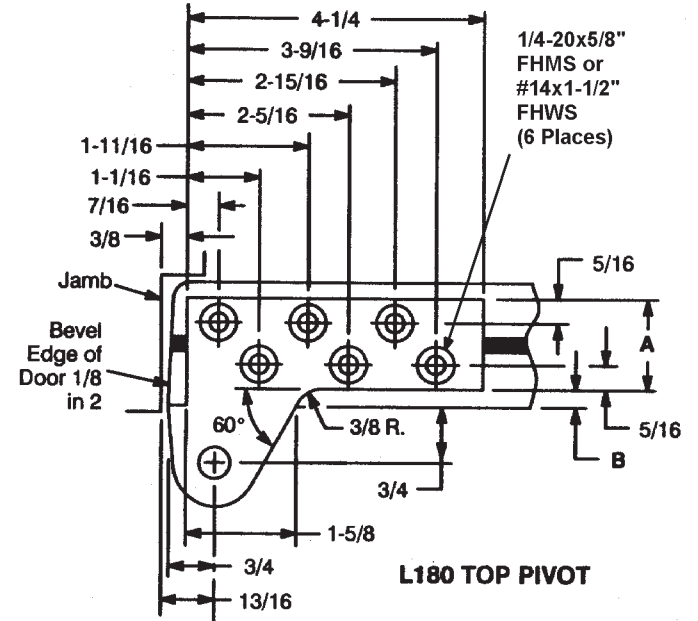
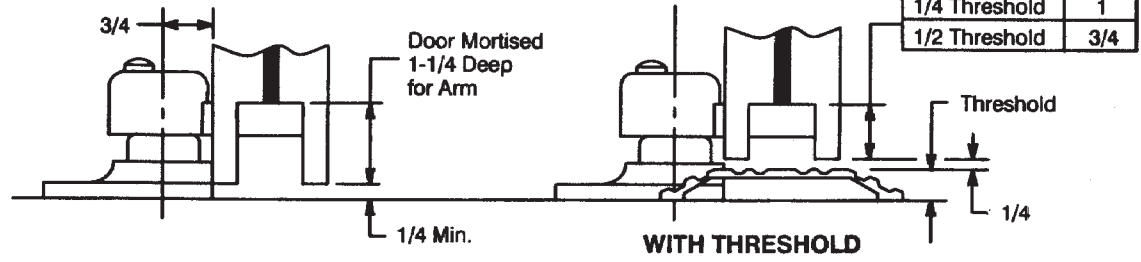
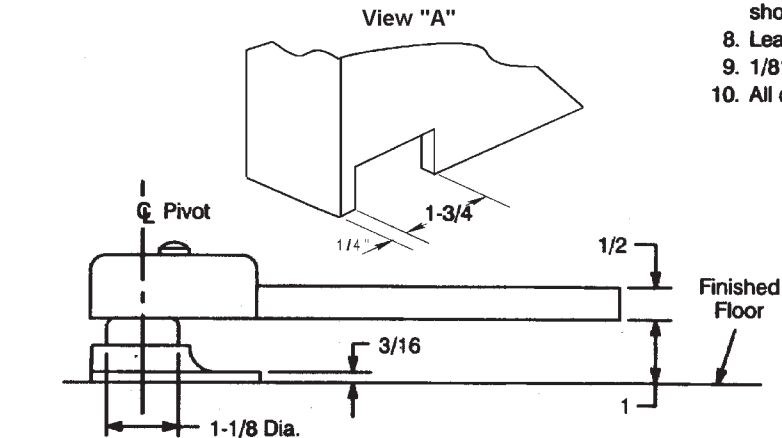


Note: For door thickness not listed, use next size smaller for preparation.

Door Size	Dim. "A"	Dim. "B"	Max. Lead Thk.
1-3/4	1-1/4	1/4	9/32
2	1-3/8	5/16	3/8
2-1/4	1-1/2	3/8	15/32
2-1/2	1-5/8	7/16	9/16
3	2	1/2	3/4

Table above is based on the assumption that lead is placed in center of door.

- Notes:**
1. Do not scale drawing.
  2. Right hand shown.
  3. Suitable reinforcing by others.
  4. Maximum degree of opening 180°, trim permitting.
  5. Arm drilled to receive 1/4-20 x 1" FHMS or #14 x 2" FHWS.
  6. For wood doors predrill arm and top pivot holes to prevent splitting.
  7. If vertical adjustment is required, two (2) 1/16" shims are provided. Place shims between arm and spindle shoulder collar.
  8. Lead lining by others.
  9. 1/8" min. clearance required between door and stop.
  10. All dimensions are in inches.



**L147 Pivot Set  
3/4" Offset  
For Lead Lined Doors**

**RIXSON**  
ASSA ABLOY  
www.rixson.com

TEMPLATE NUMBER	DATE
<b>PS30350</b>	<b>05-09</b>