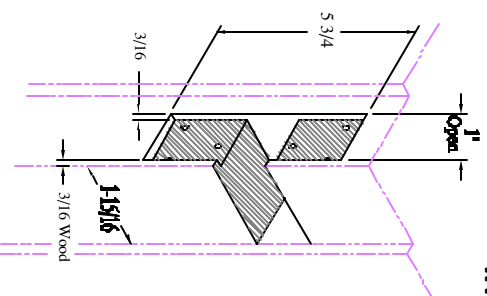
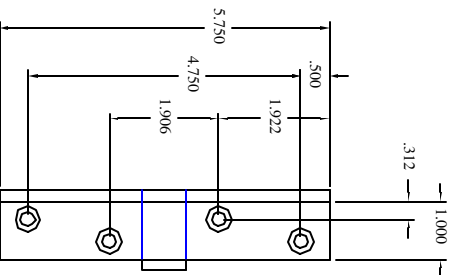
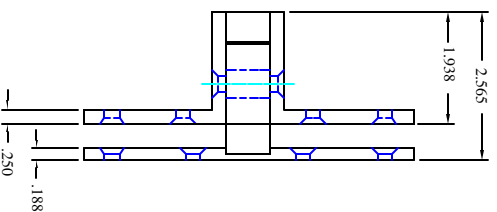
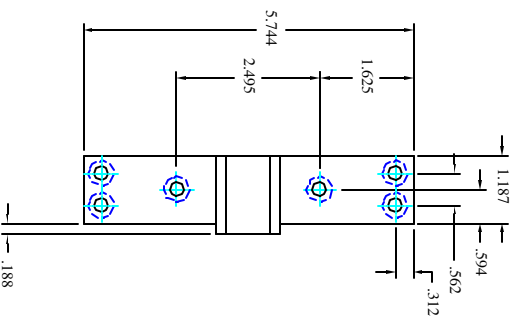
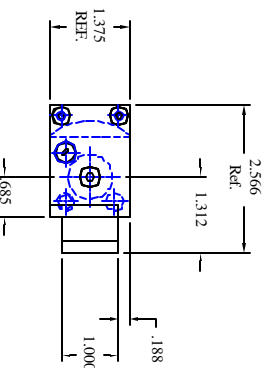


# ACCURATE LOCK AND HARDWARE CO. LLC.

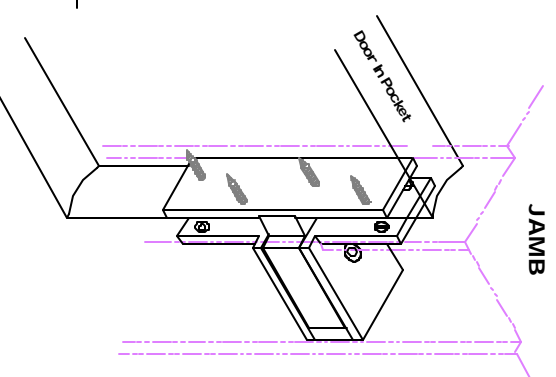
Manufactures of  
CUSTOM LOCKS AND ARCHITECTURAL HARDWARE

## HARMON HINGE INSTALLATION TEMPLATE 1 3/8" THK. DOOR

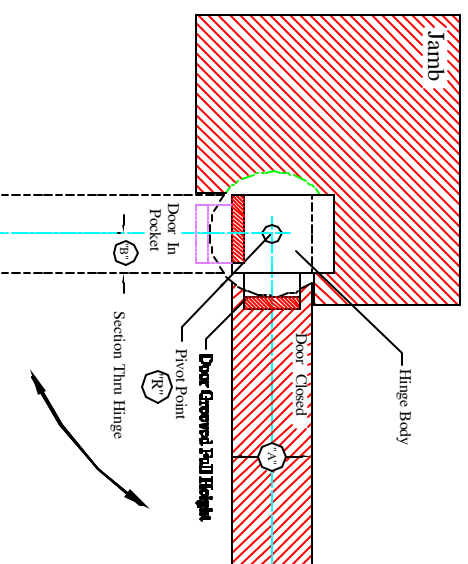
ANNIE PLACE, STAMFORD, CT. 06902  
(203) 348-8865 FAX (203) 348-5234  
EMAIL: Accurate1h@aol.com  
www.Accurate.to



Door Jamb



Dimensions	
Door Size	1.375"
	1.375"
	.6875"
	1.093"



ACCURATE Template Harmon Hinge is made to conform to this drawing  
Machine Screw Size - 3/4 x 12-24 F.H  
Wood Screw Size - 1-1/4 x 12 F.H