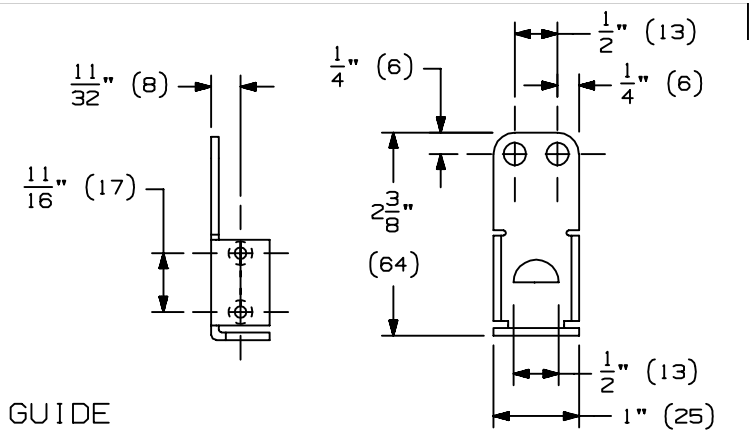
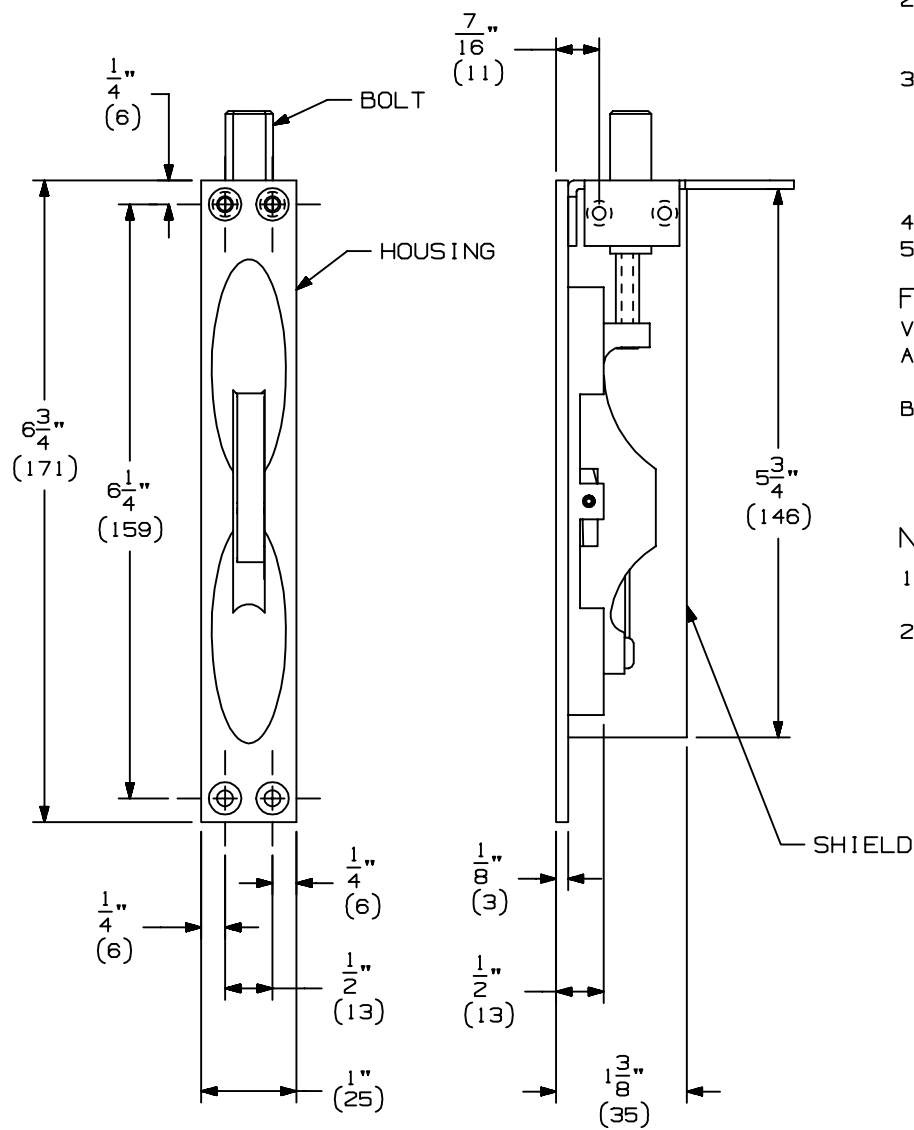


STRIKE



GUIDE

FLUSH BOLT



FB358 INSTALLATION INSTRUCTIONS:

1. MORTISE INACTIVE DOOR FOR FB358.
2. HANG INACTIVE DOOR, WITH DOOR OPEN. MEASURE MINIMUM CLEARANCE FROM DOOR TO FINISHED FLOOR.
3. REMOVE DOOR. INSTALL FB358 FLUSH BOLT. ADJUST TOP BOLT SO IT IS FLUSH WITH TOP OF DOOR. ADJUST BOTTOM BOLT TO PROJECT 1/8" (3) LESS THAN MINIMUM CLEARANCE.
4. INSTALL STRIKE.
5. HANG DOOR.

FIELD ADJUSTMENTS

- VERTICAL ROD ADJUSTMENT
- A. TOP BOLT - REMOVE GUIDE, TURN BOLT AS NECESSARY TO ADJUST.
 - B. BOTTOM BOLT - REMOVE DOOR FROM HINGES. REMOVE GUIDE. TURN BOLT AS NECESSARY TO ADJUST.

NOTES:

1. THE DOOR MUST HAVE AT LEAST 1/4" (6) UNDERCUT.
2. FOR ADDITIONAL INFORMATION ON OPTIONAL DUST PROOF STRIKES, SEE DP1 & DP2 TEMPLATES.

	QTY	SCREW DETAILS
HOUSING	2	#8 X 1" FPHSMS
GUIDE	2	#8 X 1" FPHSMS
STRIKE	2	#8 X 3/4" FPHSMS

IVES FB358 MANUAL FLUSH BOLT FOR WOOD DOORS INSTALLATION TEMPLATE



NOTE: NOTE: DIMENSIONS IN () ARE MILLIMETERS.

TEMPLATE NUMBER: INST.FB358_0 DATE: 09-01-01