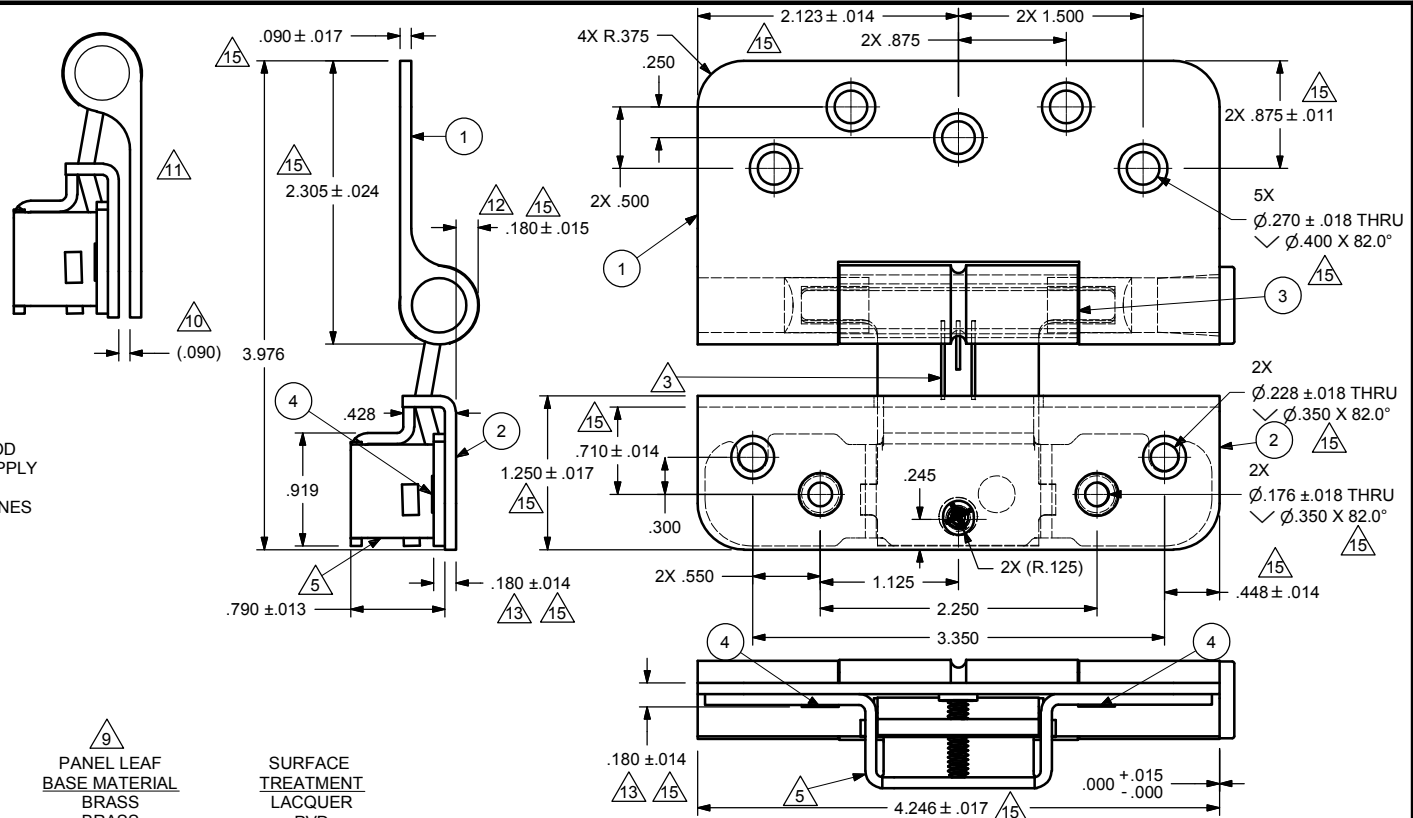


NOTES:

1. FOR GENERAL SPECIFICATIONS, REFER TO DOC 00003952
2. LH HINGE SHOWN
- △ 3. CENTER ADJUSTMENT MARKS ALIGNED ±.062
4. FOR COATING REQUIREMENTS, REFER TO DOC 00015001
- △ 5. BACKING PLATE IS STAINLESS ON PANEL LEAF ONLY WITH BRASS BASE MATERIAL
6. BOTH ADJUSTMENT SCREWS ARE 5/32" HEX
7. NO MATERIAL COMBINATIONS WHICH CAUSE LOCALIZED CORROSION ARE ALLOWED
8. DRAWING APPLIES TO ASSEMBLED HINGES WITH SURFACES FINISHED
- △ 9. JAMB LEAF IS ALUMINUM ON ALL POWDER FINISHES AND BRASS ON OTHER FINISHES
- △ 10. SWEDGE WITH HORIZONTAL ADJUSTMENT CENTERED
- △ 11. JAMB LEAF IN CLOSED POSITION
12. OFFSET SHOWN CENTERS HORIZONTAL ADJUSTMENT WITHIN TOLERANCE. MEASURE AT TOP OR BOTTOM OF KNUCKLE, NOT AT SHROUD
- △ 13. MEASURE IN LINE WITH RIVET
14. NOTES 3 & 12 APPLY TO HINGES AS RECEIVED FROM SUPPLIER
- △ 15. TOLERANCES APPLY TO ALL FINISH TYPES: PAINTED, PLATED, AND POLISHED. TOLERANCES CALCULATED USING RSS METHOD WITH ±.010 FOR FINISHING. TOLERANCES NOT INTENDED TO APPLY TO UNFINISHED COMPONENTS. SEE NOTE 8
- △ 16. FOR 2011 AND LATER UIFD, 2012 AND LATER UOFD PRODUCT LINES
- △ 17. FINISH FROM SUPPLIER IS VISUALLY APPROVED



PRODUCT CATEGORY / UNIT TYPE

△ 16	ULTIMATE INSWING FRENCH DOOR / CUIFD, WUIFD
△ 16	OUTSWING FRENCH DOOR / COFD, WOFD
	ULTIMATE OUTSWING FRENCH DOOR / CUOFD, WUOFD
	2 1/4" INSWING FRENCH DOOR / CMIFD, WMIFD
	2 1/4" OUTSWING FRENCH DOOR / CMOFD, WMOFD
	2 1/4" INSWING ARCHTOP FRENCH DOOR / CMIAF, WMIAF
	2 1/4" OUTSWING ARCHTOP FRENCH DOOR / CMOAF, WMOAF

FINISH	LEFT HAND PART NO	RIGHT HAND PART NO	PANEL LEAF BASE MATERIAL	SURFACE TREATMENT
ANTIQUE BRASS	02101180	02101181	BRASS	LACQUER
OIL RUBBED BRONZE PVD	02101190	02101191	BRASS	PVD
SATIN CHROME	02101174	02101175	BRASS	NONE
GOLD	02102009	02102010	STEEL	POWDER
WHITE	02102011	02102012	STEEL	POWDER
BRIGHT BRASS PVD	02101188	02101189	BRASS	PVD
SATIN TAUPE	02102013	02102014	STEEL	POWDER
DARK BRONZE (KN4)	02102015	02102016	STEEL	POWDER
SILVER FROST	02102017	02102018	STEEL	POWDER
OIL RUBBED BRONZE	02101176	02101177	BRASS	LACQUER
SATIN NICKEL PVD	02101178	02101179	BRASS	PVD
△ 17 MATTE BLACK	02102021	02102022	STEEL	POWDER

ITEM	DWG NO	DESCRIPTION
4	NA	RIVET
3	NA	SHROUD
2	NA	PANEL LEAF
1	NA	EXTRUDED JAMB LEAF

PARTS LIST

MARVIN Windows and Doors		RESEARCH & DEVELOPMENT WARROAD, MN, USA, (218) 386-4021			
PRODUCT CATEGORY:	SEE LIST	DWG TYPE:	COMPONENT		
UNIT TYPE:	SEE LIST	DESCRIPTION:	HINGE, ADJUSTABLE, FINISHED - EXTENDED		
CHK:	RAG	SIZE:	B	CLASS:	HDWR
APP:	BRN	SCALE:	1:1	DATE:	02/10/11
DWG NO:	00073528		DWG BY:	MOE, RYAN	
SHEET:	1 OF 1				

REV	DESCRIPTION / REQUESTOR	ECN NO	DATE	REV BY
3.0	CHANGED THE CLOSED VIEW OF THE HINGE FROM RIGHT TO LEFT HAND VIEW	22414	03/13/18	CBP
2.0	REMOVED AND ADDED NEW PART NUMBERS DUE TO THE TRANSITIONING FROM BRASS TO ALUMINUM JAMB LEAF ,THIS DOES NOT INCLUDE THE PVD AND ANTIQUE BRASS, SATIN CHROME AND OIL RUBBED BRONZE	21581	11/07/17	JDS
1.0	ADDED MATTE BLACK COLOR USAGE, ADDED NOTE 17, UPDATED DRAWING TEMPLATE	19801	07/05/16	GGH

NOTICE - CONFIDENTIAL INFORMATION
 The information in this document is privileged and strictly confidential. The information contained herein shall be used only by Marvin Windows and Doors employees and by those agents or suppliers granted official written permission. If the reader of this document is not the intended recipient, or the employee or agent of the intended recipient, please delete this document from all data storage devices, and destroy all hard copies. Any unauthorized dissemination, distribution, copying or other use of the information contained in this document is strictly prohibited.